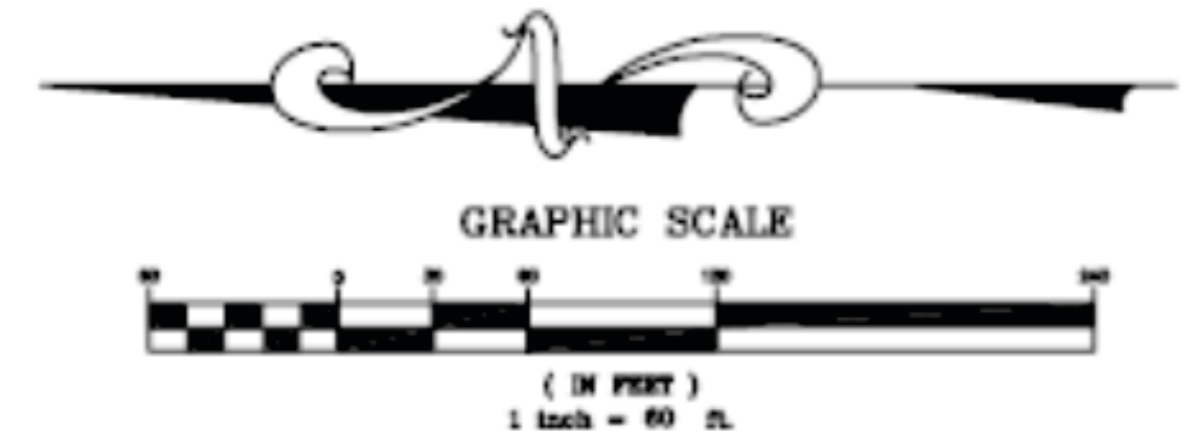


SOUTHERN PINES VILLAGE

SECTION 20, TOWNSHIP 19 SOUTH, RANGE 20 EA

CITY OF INVERNESS
CITRUS COUNTY, FLORIDA



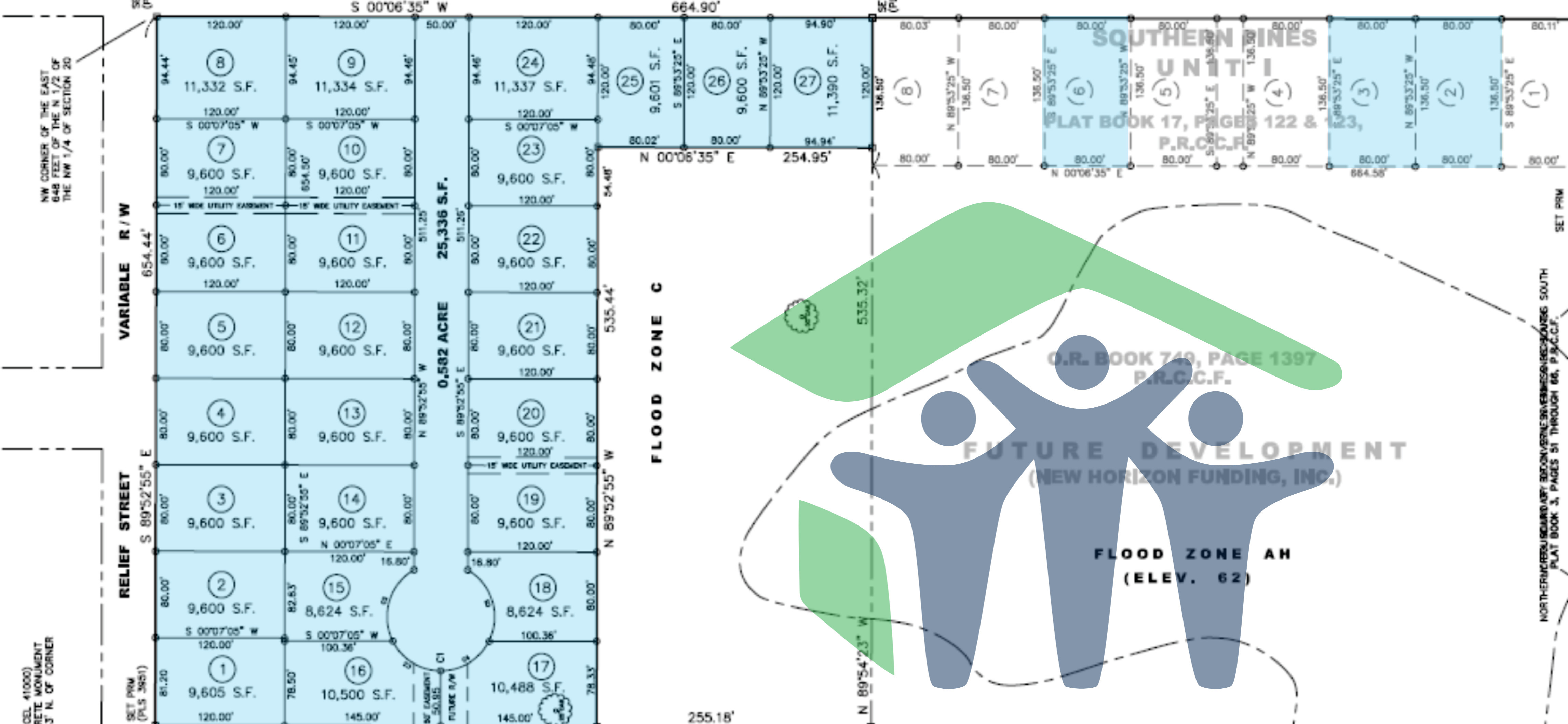
CABOT STREET

WRIGHT STREET

HUDSON STREET

S. APOPKA AVE.

60' R/W



LANDS DESCRIBED IN
O.R. BOOK 982, PAGE 846
P.R.C.C.F.

LANDS DESCRIBED IN
O.R. BOOK 1179, PAGE 416
P.R.C.C.F.

LANDS DESCRIBED IN
O.R. BOOK 362, PAGE 670
P.R.C.C.F.

CURVE TABLE						
NO.	DELTA	RADIUS	LENGTH	TAN.	CHORD	DIST.
C1	300°00'00"	50.00'	261.80'	28.87'	S 00°07'05" W	50.00'
C2	86°47'07"	50.00'	75.73'	47.27'	N 73°16'29" W	68.70'
C3	63°12'53"	50.00'	55.17'	30.77'	S 31°43'31" W	52.41'
C4	63°12'53"	50.00'	55.17'	30.77'	S 31°29'22" E	52.41'
C5	86°47'07"	50.00'	75.73'	47.27'	N 73°30'38" E	68.70'

